

FOR ADULTS WITH **MODERATE TO SEVERE
PLAQUE PSORIASIS** AND FOR ADULTS WITH
ACTIVE PSORIATIC ARTHRITIS

THIS IS


Skylar[®]
risankizumab-rzaa



SKYRIZI USES

SKYRIZI is a prescription medicine used to treat adults:

- with moderate to severe plaque psoriasis who may benefit from taking injections or pills (systemic therapy) or treatment using ultraviolet or UV light (phototherapy).
- with active psoriatic arthritis (PsA).

SAFETY CONSIDERATIONS

SKYRIZI may cause serious side effects, including:

- **Serious allergic reactions:** Stop using SKYRIZI and get emergency medical help right away if you get any symptoms of a serious allergic reaction.
- **Infections:** SKYRIZI may increase your risk of infections. Before starting treatment, your doctor should check you for infections and tuberculosis. Tell your doctor right away if you have an infection or symptoms of one.

Do not use SKYRIZI if you are allergic to risankizumab-rzaa or any of the ingredients in SKYRIZI. Also, tell your doctor if you plan to or recently received a vaccine.

Please see additional Important Safety Information on [page 8](#).
Please see accompanying [Full Prescribing Information](#).

IN Ps CLINICAL TRIALS WITH SKYRIZI,
**PEOPLE ACHIEVED
90% CLEARER SKIN**
AT 4 MONTHS

**...AND SUSTAINED
IT THROUGH 1 YEAR**

BEFORE SKYRIZI

AT 4 MONTHS



SKYRIZI clinical
trial patient



Your results
may vary

3 OUT OF **4** PEOPLE ACHIEVED
90% CLEARER SKIN
AT 4 MONTHS

OF THOSE
Nearly

9 OUT OF **10** PEOPLE SUSTAINED
90% CLEARER SKIN
THROUGH 1 YEAR

IN ANOTHER Ps STUDY
MOST PEOPLE HAD
90% CLEARER SKIN
AT 5 YEARS*

*In a less rigorous study, at 1 year and thereafter,
physicians and patients knew that SKYRIZI was being
used, which may have influenced results.

SAFETY CONSIDERATIONS

SKYRIZI may cause serious side effects, including:

- **Serious allergic reactions:** Stop using SKYRIZI and get emergency medical help right away if you get any symptoms of a serious allergic reaction.
- **Infections:** SKYRIZI may increase your risk of infections. Before starting treatment, your doctor should check you for infections and tuberculosis. Tell your doctor right away if you have an infection or symptoms of one.

Do not use SKYRIZI if you are allergic to risankizumab-rzaa or any of the ingredients in SKYRIZI. Also, tell your doctor if you plan to or recently received a vaccine.

**Please see additional Important Safety Information on page 8.
Please see accompanying Full Prescribing Information.**

MODERATE TO SEVERE PLAQUE PSORIASIS

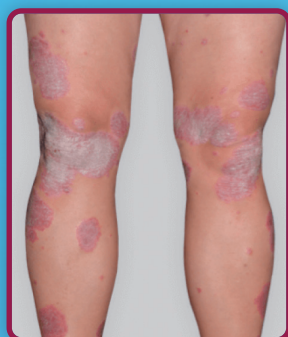
IN Ps CLINICAL TRIALS, PEOPLE ACHIEVED MAXIMUM SKIN CLEARANCE

NEARLY 6 OUT OF 10
**ACHIEVED 100%
CLEAR SKIN AT 1 YEAR**

NEARLY 4 OUT OF 10 ACHIEVED IT AT 4 MONTHS

BEFORE SKYRIZI

AT 1 YEAR



SKYRIZI clinical
trial patient



Your results
may vary

NOT ONLY DID SKYRIZI HELP CLEAR
SKIN, BUT PEOPLE ALSO EXPERIENCED
**IMPROVEMENT IN
OTHER PSORIASIS
SYMPTOMS**

At 4 months, on average, people with psoriasis reported a significant improvement in the pain, itching, burning, and redness of psoriasis—and some even said they had no plaque psoriasis symptoms.



PAIN



ITCHING



REDNESS



BURNING

SAFETY CONSIDERATIONS

SKYRIZI may cause serious side effects, including:

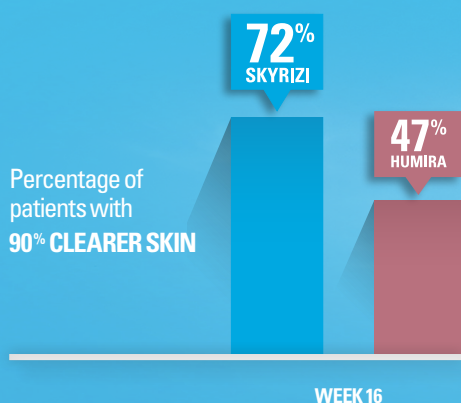
- **Serious allergic reactions:** Stop using SKYRIZI and get emergency medical help right away if you get any symptoms of a serious allergic reaction.
- **Infections:** SKYRIZI may increase your risk of infections. Before starting treatment, your doctor should check you for infections and tuberculosis. Tell your doctor right away if you have an infection or symptoms of one.

Do not use SKYRIZI if you are allergic to risankizumab-rzaa or any of the ingredients in SKYRIZI. Also, tell your doctor if you plan to or recently received a vaccine.

**Please see additional Important Safety Information on page 8.
Please see accompanying Full Prescribing Information.**

COULD YOUR SKIN BE CLEARER WITH SKYRIZI?

In a Ps clinical study of 605 patients,
MORE PEOPLE ON SKYRIZI ACHIEVED 90% CLEARER SKIN
than those on HUMIRA® (adalimumab)



Some **HUMIRA** patients switched to **SKYRIZI**.* Of those who switched,
3X MORE PEOPLE ACHIEVED 90% CLEARER SKIN



*At 16 weeks, 109 HUMIRA patients who had at least 50% but less than 90% clearer skin were either switched to SKYRIZI for 28 more weeks or stayed on HUMIRA through the remainder of the study, a total of 44 weeks.

SAFETY CONSIDERATIONS

SKYRIZI may cause serious side effects, including:

- **Serious allergic reactions:** Stop using SKYRIZI and get emergency medical help right away if you get any symptoms of a serious allergic reaction.
- **Infections:** SKYRIZI may increase your risk of infections. Before starting treatment, your doctor should check you for infections and tuberculosis. Tell your doctor right away if you have an infection or symptoms of one.

Do not use SKYRIZI if you are allergic to risankizumab-rzaa or any of the ingredients in SKYRIZI. Also, tell your doctor if you plan to or recently received a vaccine.

Please see additional Important Safety Information on page 8. Please see accompanying [Full Prescribing Information](#).

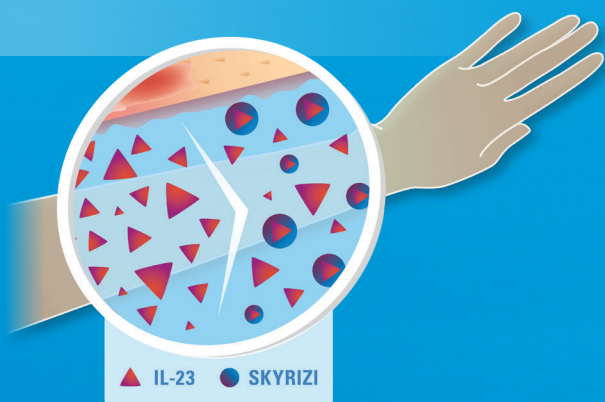
**Not achieving the skin clearance you want?
Talk to your dermatologist to see if switching to SKYRIZI is right for you.**

PLAQUES ARE A SYMPTOM OF AN IMBALANCE INSIDE YOUR BODY

Although the exact cause of plaque psoriasis is unknown, your body may produce too much of a protein called IL-23 (IL=interleukin).

IL-23 is one of several proteins that may contribute to excess inflammation inside the body, which can lead to painful, red, itchy plaques on the skin.

This is where SKYRIZI comes in. SKYRIZI is a type of immune protein similar to other proteins produced by your own body. It works by binding to the excess IL-23. This can help reduce the overproduction of IL-23 in your immune system—reducing inflammation that can lead to skin plaques as well as joint symptoms.



SAFETY CONSIDERATIONS

SKYRIZI may cause serious side effects, including:

- **Serious allergic reactions:** Stop using SKYRIZI and get emergency medical help right away if you get any symptoms of a serious allergic reaction.
- **Infections:** SKYRIZI may increase your risk of infections. Before starting treatment, your doctor should check you for infections and tuberculosis. Tell your doctor right away if you have an infection or symptoms of one.

Do not use SKYRIZI if you are allergic to risankizumab-rzaa or any of the ingredients in SKYRIZI. Also, tell your doctor if you plan to or recently received a vaccine.

WHAT IS PSORIATIC ARTHRITIS AND HOW DO YOU RECOGNIZE IT?

The excess inflammation that may cause plaque psoriasis symptoms can cause joint pain, stiffness, and swelling. This could be **psoriatic arthritis** (PsA). However, the exact cause of PsA is not fully understood.

1 out of 3 people with psoriasis may also develop psoriatic arthritis.

Joint pain, stiffness, and swelling are common signs and symptoms of psoriatic arthritis.

While joint and skin severity may be different from one person to the next, skin severity is not directly related to joint severity.

Talk to your dermatologist if you recognize any of these joint symptoms.



JOINT PAIN



STIFFNESS



SWELLING



TENDERNESS

Please see additional Important Safety Information on page 8. Please see accompanying Full Prescribing Information.

RESULTS YOU CAN SEE AND FEEL

IN CLINICAL STUDIES, FOR ADULTS WITH **ACTIVE PSORIATIC ARTHRITIS (PsA)**, SKYRIZI HELPED:

THE MAJORITY OF PATIENTS FEEL A 20% IMPROVEMENT AND SIGNIFICANT RELIEF in PsA symptoms, including joint pain, stiffness, and swelling at 24 weeks; on average, patients experienced less fatigue.

Some people saw a **50% TO 70% IMPROVEMENT** in their joint symptoms at week 24.

In another study, a majority of patients who continued taking SKYRIZI saw a 20% improvement in their PsA symptoms **EVEN AT 2 YEARS.***

*In a less rigorous study, patients and physicians were aware of SKYRIZI treatment, which may have influenced these results at 2 years.



SAFETY CONSIDERATIONS

SKYRIZI may cause serious side effects, including:

- **Serious allergic reactions:** Stop using SKYRIZI and get emergency medical help right away if you get any symptoms of a serious allergic reaction.
- **Infections:** SKYRIZI may increase your risk of infections. Before starting treatment, your doctor should check you for infections and tuberculosis. Tell your doctor right away if you have an infection or symptoms of one.

Do not use SKYRIZI if you are allergic to risankizumab-rzaa or any of the ingredients in SKYRIZI. Also, tell your doctor if you plan to or recently received a vaccine.

IN CLINICAL STUDIES, **SKYRIZI ALSO HELPED PEOPLE WITH PsA:**



IMPROVE DAILY ACTIVITIES, such as getting up, walking, dressing, eating, bathing, reaching, and gripping.



SEE 90% CLEARER SKIN in those who also had plaque psoriasis at week 24.



FEEL IMPROVEMENT in swelling in areas like the heel and elbow for those with enthesitis; some patients experienced complete resolution of their enthesitis at week 24.[†]



FEEL IMPROVEMENT in swelling of fingers and toes for those with dactylitis; a majority of patients experienced complete resolution of their dactylitis at week 24.[†]

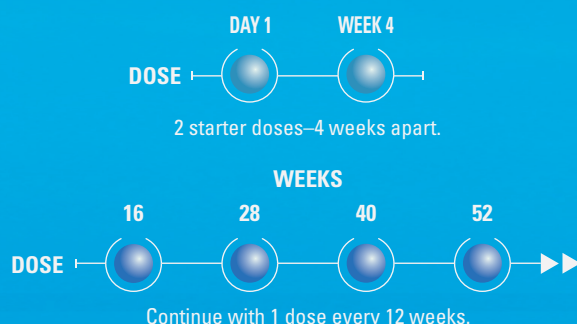
[†]Only evaluated in patients that showed signs of dactylitis and enthesitis when they started the clinical trial. Complete resolution defined as no longer had signs of swelling.

Please see additional Important Safety Information on page 8. Please see accompanying Full Prescribing Information.

4 DOSES A YEAR

AFTER 2 STARTER DOSES

SKYRIZI dosing may fit into **your** schedule.



The SKYRIZI Pen was awarded an Ease of Use certification from the Arthritis Foundation's independent lab testing, which included psoriatic arthritis patients.



Each dose is a 150 mg/mL injection.

CHOOSE WHAT'S RIGHT FOR YOU—SKYRIZI can be taken in-office or at home after you receive training. Talk to your dermatologist to see which option is right for you.

Learn more about the SKYRIZI Pen at SKYRIZIPenInfo.com



SAFETY CONSIDERATIONS

SKYRIZI may cause serious side effects, including:

- **Serious allergic reactions:** Stop using SKYRIZI and get emergency medical help right away if you get any symptoms of a serious allergic reaction.
- **Infections:** SKYRIZI may increase your risk of infections. Before starting treatment, your doctor should check you for infections and tuberculosis. Tell your doctor right away if you have an infection or symptoms of one.

Do not use SKYRIZI if you are allergic to risankizumab-rzaa or any of the ingredients in SKYRIZI. Also, tell your doctor if you plan to or recently received a vaccine.

PAY AS LITTLE AS

\$5* PER QUARTERLY DOSE†

Sign up for your Skyrizi Complete Savings Card to receive an email that will give you instant access to savings.

Call **Skyrizi Complete** for help with your questions on the prescription and insurance processes or visit saveonskyrizi.com for more information.

1.866.SKYRIZI
(1.866.759.7494)

*Eligibility: Available to patients with commercial insurance coverage for SKYRIZI who meet eligibility criteria. This co-pay assistance program is not available to patients receiving prescription reimbursement under any federal, state, or government-funded insurance programs (for example, Medicare [including Part D], Medicare Advantage, Medigap, Medicaid, TRICARE, Department of Defense, or Veterans Affairs programs) or where prohibited by law. Offer subject to change or termination without notice. Restrictions, including monthly maximums, may apply. This is not health insurance. **For full Terms and Conditions, visit SKYRIZISavingsCard.com or call 1.866.SKYRIZI for additional information.** To learn about AbbVie's privacy practices and your privacy choices, visit <https://abbv.ie/corpprivacy>.

†\$5 per quarterly dose for SKYRIZI, and for each starting dose—Week 0 and Week 4.

Please see additional Important Safety Information on page 8. Please see accompanying Full Prescribing Information.

RESOURCES DESIGNED WITH YOU IN MIND

You are unique—and so is your treatment journey. That's why you have **Skyrizi Complete**.

Skyrizi[®] COMPLETE

It all starts with a Skyrizi Complete **Ambassador***, whose goal is to empower you to stay on track with your treatment plan as prescribed. They can provide you with access to information and resources that can help you understand the important role you play in getting started with SKYRIZI.

Once you connect with your Ambassador, they'll be able to help with insurance questions, provide supplemental injection training resources, and be there to support you on your SKYRIZI treatment journey.

Once your doctor gives you a prescription for SKYRIZI, get started with Skyrizi Complete by signing up at www.skyrizisupport.com or calling **1.866.SKYRIZI** (1.866.759.7494).

IMPORTANT SAFETY INFORMATION AND USE

Important Safety Information

What is the most important information I should know about SKYRIZI[®] (risankizumab-rzaa)?

SKYRIZI is a prescription medicine that may cause serious side effects, including:

Serious allergic reactions:

- Stop using SKYRIZI and get emergency medical help right away if you get any of the following symptoms of a serious allergic reaction:
 - fainting, dizziness, feeling lightheaded (low blood pressure)
 - swelling of your face, eyelids, lips, mouth, tongue, or throat
 - trouble breathing or throat tightness
 - chest tightness
 - skin rash, hives
 - itching

Infections: SKYRIZI may lower the ability of your immune system to fight infections and may increase your risk of infections. Your healthcare provider should check you for infections and tuberculosis (TB) before starting treatment with SKYRIZI and may treat you for TB before you begin treatment with SKYRIZI if you have a history of TB or have active TB. Your healthcare provider should watch you closely for signs and symptoms of TB during and after treatment with SKYRIZI.

- Tell your healthcare provider right away if you have an infection or have symptoms of an infection, including:
 - fever, sweats, or chills
 - cough
 - shortness of breath
 - blood in your mucus (phlegm)
 - muscle aches
 - warm, red, or painful skin or sores on your body different from your psoriasis
 - weight loss
 - diarrhea or stomach pain
 - burning when you urinate or urinating more often than normal

Do not use SKYRIZI if you are allergic to risankizumab-rzaa or any of the ingredients in SKYRIZI. See the Medication Guide or Consumer Brief Summary for a complete list of ingredients.

Before using SKYRIZI, tell your healthcare provider about all of your medical conditions, including if you:

- have any of the conditions or symptoms listed in the section “What is the most important information I should know about SKYRIZI?”
- have an infection that does not go away or that keeps coming back.
- have TB or have been in close contact with someone with TB.
- have recently received or are scheduled to receive an immunization (vaccine). Medications that interact with the immune system may increase your risk of getting an infection after receiving live vaccines. You should avoid receiving live vaccines right before, during, or right after treatment with SKYRIZI. Tell your healthcare provider that you are taking SKYRIZI before receiving a vaccine.
- are pregnant or plan to become pregnant. It is not known if SKYRIZI can harm your unborn baby.
- are breastfeeding or plan to breastfeed. It is not known if SKYRIZI passes into your breast milk.
- become pregnant while taking SKYRIZI. You are encouraged to enroll in the Pregnancy Registry, which is used to collect information about the health of you and your baby. Talk to your healthcare provider or call 1-877-302-2161 to enroll in this registry.

Tell your healthcare provider about all the medicines you take, including prescription and over-the-counter medicines, vitamins, and herbal supplements.

What are the possible side effects of SKYRIZI?

SKYRIZI may cause serious side effects. See “What is the most important information I should know about SKYRIZI?”

The most common side effects of SKYRIZI in people treated for plaque psoriasis and psoriatic arthritis include: upper respiratory infections, headache, feeling tired, injection site reactions, and fungal skin infections.

These are not all the possible side effects of SKYRIZI. Call your doctor for medical advice about side effects.

Use SKYRIZI exactly as your healthcare provider tells you to use it.

SKYRIZI is available in a 150 mg/mL prefilled syringe and pen.


Skyrizi[®]
risankizumab-rzaa



*Nurse Ambassadors are provided by AbbVie and do not work under the direction of your health care professional (HCP) or give medical advice. They are trained to direct patients to their HCP for treatment-related advice, including further referrals.

Please see accompanying Full Prescribing Information.

SEE THE POSSIBILITIES WITH SKYRIZI


Skyrizi[®]
risankizumab-rzaa



LASTING SKIN CLEARANCE

In clinical trials for moderate to severe plaque psoriasis, 3 out of 4 people achieved 90% clearer skin at 4 months and nearly 9 out of 10 sustained it through 1 year.

PROVEN JOINT SYMPTOM RELIEF

In clinical trials for active psoriatic arthritis, a majority of people felt significant relief of joint pain, stiffness, and swelling at 24 weeks.

WITH 4 DOSES A YEAR AFTER 2 STARTER DOSES

SKYRIZI USES

SKYRIZI is a prescription medicine used to treat adults:

- with moderate to severe plaque psoriasis who may benefit from taking injections or pills (systemic therapy) or treatment using ultraviolet or UV light (phototherapy).
- with active psoriatic arthritis (PsA).

SAFETY CONSIDERATIONS

SKYRIZI may cause serious side effects, including:

- **Serious allergic reactions:** Stop using SKYRIZI and get emergency medical help right away if you get any symptoms of a serious allergic reaction.
- **Infections:** SKYRIZI may increase your risk of infections. Before starting treatment, your doctor should check you for infections and tuberculosis. Tell your doctor right away if you have an infection or symptoms of one.

Do not use SKYRIZI if you are allergic to risankizumab-rzaa or any of the ingredients in SKYRIZI. Also, tell your doctor if you plan to or recently received a vaccine.

Please see additional Important Safety Information on page 8.

Please see accompanying Full Prescribing Information.

abbvie

© 2024 AbbVie. All rights reserved.

SKYRIZI[®] and its design are registered trademarks of AbbVie Biotechnology Ltd. US-SKZD-230426