



**Skyrizi**<sup>®</sup>  
risankizumab-rzaa

FOR ADULTS WITH MODERATE TO SEVERE CROHN'S DISEASE

# CONTROL IS EVERYTHING

The opportunity to take control of Crohn's means everything



## SKYRIZI Use<sup>1</sup>

SKYRIZI is a prescription medicine used to treat moderate to severe Crohn's disease in adults.

## SAFETY CONSIDERATIONS<sup>1</sup>

**SKYRIZI may cause serious side effects, including:**

- **Serious allergic reactions:** Stop using SKYRIZI and get emergency medical help right away if you get any symptoms of a serious allergic reaction.
  - **Infections:** SKYRIZI may increase your risk of infections. Before starting treatment, your doctor should check you for infections and tuberculosis. Tell your doctor right away if you have an infection or symptoms of one.
- Do not use SKYRIZI if you are** allergic to risankizumab-rzaa or any of the ingredients in SKYRIZI.
- Also, tell your doctor if you plan to or recently received a vaccine.
  - **Liver problems in Crohn's disease:** A person with Crohn's disease who received SKYRIZI through a vein in the arm developed changes in liver blood tests with a rash that led to hospitalization. Your doctor will do liver blood tests before and during treatment and may stop treatment with SKYRIZI if you develop liver problems.

**Please see additional Important Safety Information on page 13.**

**Please see full Prescribing Information, including Medication Guide, at [https://www.rxabbvie.com/pdf/skyrizi\\_pi.pdf](https://www.rxabbvie.com/pdf/skyrizi_pi.pdf) and discuss with your doctor.**



**Skyrizi**<sup>®</sup>  
risankizumab-rzaa

FOR ADULTS WITH MODERATE TO SEVERE CROHN'S DISEASE

# Take control of your Crohn's WITH SKYRIZI



## SKYRIZI CAN HELP PEOPLE ACHIEVE:

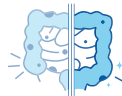


Fast **symptom relief** as early as 4 weeks



Long **lasting remission** at one year\*

\*Clinical remission was measured at 52 weeks.



**Endoscopic improvement**, meaning at least a 50% visible improvement of the intestinal lining at 12 weeks

**Talk to your doctor to learn more about SKYRIZI.**

### SAFETY CONSIDERATIONS<sup>1</sup>

SKYRIZI may cause serious side effects, including:

- **Serious allergic reactions:** Stop using SKYRIZI and get emergency medical help right away if you get any symptoms of a serious allergic reaction.
  - **Infections:** SKYRIZI may increase your risk of infections. Before starting treatment, your doctor should check you for infections and tuberculosis. Tell your doctor right away if you have an infection or symptoms of one.
- Do not use SKYRIZI if you are** allergic to risankizumab-rzaa or any of the ingredients in SKYRIZI.
- Also, tell your doctor if you plan to or recently received a vaccine.
  - **Liver problems in Crohn's disease:** A person with Crohn's disease who received SKYRIZI through a vein in the arm developed changes in liver blood tests with a rash that led to hospitalization. Your doctor will do liver blood tests before and during treatment and may stop treatment with SKYRIZI if you develop liver problems.

Please see additional Important Safety Information on page 13.

Please see full Prescribing Information, including Medication Guide, at [https://www.rxabbvie.com/pdf/skyrizi\\_pi.pdf](https://www.rxabbvie.com/pdf/skyrizi_pi.pdf) and discuss with your doctor.

  
risankizumab-rzaa



FOR ADULTS WITH MODERATE TO SEVERE CROHN'S DISEASE

# KEY TREATMENT GOALS

## for Crohn's



### WHAT ARE KEY TREATMENT GOALS?



Crohn's is a chronic and progressive disease, meaning it can get worse over time, so it's important to set treatment goals. **Symptom relief** and **remission** are key goals, but there can still be damaging inflammation of the intestinal lining. That's why it is important to also include **endoscopic improvement** as a treatment goal. Talk to your doctor about treatment goals and discuss a treatment option that is right for you.

### WHAT IS ENDOSCOPIC IMPROVEMENT AND WHY IS IT IMPORTANT?



**Endoscopic improvement means your doctor can see visible improvement of the intestinal lining,** which may be done using an endoscopy. An endoscopy (such as a colonoscopy) is a non-surgical procedure to view the digestive tract.

To learn about endoscopic improvement, visit [SkyriziCrohnsResults.com](https://www.skyrizicrohnsresults.com)

### SAFETY CONSIDERATIONS<sup>1</sup>

**SKYRIZI may cause serious side effects, including:**

- **Serious allergic reactions:** Stop using SKYRIZI and get emergency medical help right away if you get any symptoms of a serious allergic reaction.
- **Infections:** SKYRIZI may increase your risk of infections. Before starting treatment, your doctor should check you for infections and tuberculosis. Tell your doctor right away if you have an infection or symptoms of one.

**Do not use SKYRIZI if you are** allergic to risankizumab-rzaa or any of the ingredients in SKYRIZI.

- Also, tell your doctor if you plan to or recently received a vaccine.
- **Liver problems in Crohn's disease:** A person with Crohn's disease who received SKYRIZI through a vein in the arm developed changes in liver blood tests with a rash that led to hospitalization. Your doctor will do liver blood tests before and during treatment and may stop treatment with SKYRIZI if you develop liver problems.

**Please see additional Important Safety Information on page 13.**

**Please see full Prescribing Information, including Medication Guide, at [https://www.rxabbvie.com/pdf/skyrizi\\_pi.pdf](https://www.rxabbvie.com/pdf/skyrizi_pi.pdf) and discuss with your doctor.**

  
**Skyrizi**<sup>®</sup>  
risankizumab-rzaa

FOR ADULTS WITH MODERATE TO SEVERE CROHN'S DISEASE

# SKYRIZI WORKS DIFFERENTLY

SKYRIZI specifically targets and binds to interleukin-23 (IL-23), which is one of the key proteins responsible for excess inflammation that can contribute to Crohn's symptoms.

While the exact causes of Crohn's are not fully known, some possible contributing factors include family history, the environment, and an overactive immune system. The immune system is where IL-23 is naturally produced to cause inflammation as part of your body's response to threats. But when your body produces too much IL-23, it can cause excess inflammation that can contribute to Crohn's symptoms.



To watch a video about how SKYRIZI works, visit [HowSkyriziCDWorks.com](https://www.howskyrizicdworks.com)

## SAFETY CONSIDERATIONS<sup>1</sup>

SKYRIZI may cause serious side effects, including:

- **Serious allergic reactions:** Stop using SKYRIZI and get emergency medical help right away if you get any symptoms of a serious allergic reaction.
  - **Infections:** SKYRIZI may increase your risk of infections. Before starting treatment, your doctor should check you for infections and tuberculosis. Tell your doctor right away if you have an infection or symptoms of one.
- Do not use SKYRIZI if you are** allergic to risankizumab-rzaa or any of the ingredients in SKYRIZI.
- Also, tell your doctor if you plan to or recently received a vaccine.
  - **Liver problems in Crohn's disease:** A person with Crohn's disease who received SKYRIZI through a vein in the arm developed changes in liver blood tests with a rash that led to hospitalization. Your doctor will do liver blood tests before and during treatment and may stop treatment with SKYRIZI if you develop liver problems.

Please see additional Important Safety Information on page 13.

Please see full Prescribing Information, including Medication Guide, at [https://www.rxabbvie.com/pdf/skyrizi\\_pi.pdf](https://www.rxabbvie.com/pdf/skyrizi_pi.pdf) and discuss with your doctor.

  
risankizumab-rzaa



FOR ADULTS WITH MODERATE TO  
SEVERE CROHN'S DISEASE

  
Skyrizi®

**FIRST & ONLY**

**IL-23i FOR CROHN'S THAT CAN DELIVER**

**BOTH**

**CLINICAL REMISSION AND  
ENDOSCOPIC IMPROVEMENT**

IL-23 inhibitor (IL-23i) with clinical remission  
and endoscopic response co-primary measures  
in label at both 12 and 52 weeks.

## RESULTS you can FEEL

Some felt significant symptom relief as  
early as **4 weeks**, including:

- **less abdominal pain**
- **fewer bowel movements**

The majority of people on SKYRIZI achieved  
**long-lasting remission at 1 year.\***

\*Clinical remission was measured at 52 weeks.

## And your doctor can SEE

Monitoring endoscopic changes is an important part  
of managing your Crohn's and reaching your treatment goals.  
That's because, even if you're feeling better, damaging  
inflammation may continue to occur in the intestinal lining.  
Your doctor can see this on an endoscopy.



Endoscopic remission was achieved in **4/10** people  
on SKYRIZI—meaning little to no visible evidence  
of active Crohn's at 1 year.\*\*

Individual results may vary.

\*Based on areas that were assessed on endoscopy.

\*\*In the clinical trial, this measure was not tested for a  
difference between SKYRIZI and placebo.

### SAFETY CONSIDERATIONS<sup>1</sup>

SKYRIZI may cause serious side effects, including:

- **Serious allergic reactions:** Stop using SKYRIZI and get emergency medical help right away if you get any symptoms of a serious allergic reaction.
  - **Infections:** SKYRIZI may increase your risk of infections. Before starting treatment, your doctor should check you for infections and tuberculosis. Tell your doctor right away if you have an infection or symptoms of one.
- Do not use SKYRIZI if you are** allergic to risankizumab-rzaa or any of the ingredients in SKYRIZI.
- Also, tell your doctor if you plan to or recently received a vaccine.
  - **Liver problems in Crohn's disease:** A person with Crohn's disease who received SKYRIZI through a vein in the arm developed changes in liver blood tests with a rash that led to hospitalization. Your doctor will do liver blood tests before and during treatment and may stop treatment with SKYRIZI if you develop liver problems.

Please see additional Important Safety Information on page 13.

Please see full Prescribing Information, including Medication Guide, at  
[https://www.rxabbvie.com/pdf/skyrizi\\_pi.pdf](https://www.rxabbvie.com/pdf/skyrizi_pi.pdf) and discuss with your doctor.

  
**Skyrizi**®  
risankizumab-rzaa

## FOR ADULTS WITH MODERATE TO SEVERE CROHN'S DISEASE

## SKYRIZI RESULTS

## DOSING INFORMATION

Adults with Crohn's will receive a starter dose of SKYRIZI through a vein in the arm (intravenous infusion) by a healthcare provider at a facility. After the starter doses, SKYRIZI is received as an injection under the skin (subcutaneous injection) using the prefilled cartridge with On-Body Injector. SKYRIZI is available as 180 mg or 360 mg maintenance dosage options. **Your doctor will decide what maintenance dose is right for you.**

## PATIENTS WHO ACHIEVED CLINICAL REMISSION ON SKYRIZI

meaning few or no symptoms

CD-1 Study at Week 12

600 mg  
IV infusion

**45%**

25% placebo

CD-2 Study at Week 12

600 mg  
IV infusion

**42%**

20% placebo

CD-3 Study at Week 52

180 mg/1.2 mL  
maintenance injection

**61%**

46% placebo

CD-3 Study at Week 52

360 mg/2.4 mL  
maintenance injection

**57%**

46% placebo

## PATIENTS WHO ACHIEVED ENDOSCOPIC IMPROVEMENT ON SKYRIZI

meaning at least a 50% visible improvement of the intestinal lining

CD-1 Study at Week 12

600 mg  
IV infusion

**40%**

12% placebo

CD-2 Study at Week 12

600 mg  
IV infusion

**29%**

11% placebo

CD-3 Study at Week 52

180 mg/1.2 mL  
maintenance injection

**50%**

22% placebo

CD-3 Study at Week 52

360 mg/2.4 mL  
maintenance injection

**48%**

22% placebo

Individual results may vary.

CD-1 (n=336) and CD-3 (n=252) clinical studies were a mixed population of patients with or without prior biologic failure. CD-2 (n=191) clinical study consisted of patients who failed at least one biologic.

CD-3 evaluated SKYRIZI 180 mg (n=135) and SKYRIZI 360 mg (n=117) maintenance doses in patients who had achieved clinical response (a reduction in CDAI of at least 100 points from baseline) after completion of 12-week SKYRIZI induction treatment (CD-1 and CD-2).

**Ask your gastroenterologist how you can take control of your Crohn's with SKYRIZI.**

SAFETY CONSIDERATIONS<sup>1</sup>

SKYRIZI may cause serious side effects, including:

- **Serious allergic reactions:** Stop using SKYRIZI and get emergency medical help right away if you get any symptoms of a serious allergic reaction.
  - **Infections:** SKYRIZI may increase your risk of infections. Before starting treatment, your doctor should check you for infections and tuberculosis. Tell your doctor right away if you have an infection or symptoms of one.
- Do not use SKYRIZI if you are** allergic to risankizumab-rzaa or any of the ingredients in SKYRIZI.
- Also, tell your doctor if you plan to or recently received a vaccine.
  - **Liver problems in Crohn's disease:** A person with Crohn's disease who received SKYRIZI through a vein in the arm developed changes in liver blood tests with a rash that led to hospitalization. Your doctor will do liver blood tests before and during treatment and may stop treatment with SKYRIZI if you develop liver problems.

Please see additional Important Safety Information on page 13.

Please see full Prescribing Information, including Medication Guide, at [https://www.rxabbvie.com/pdf/skyrizi\\_pi.pdf](https://www.rxabbvie.com/pdf/skyrizi_pi.pdf) and discuss with your doctor.



**Skyrizi**<sup>®</sup>  
risankizumab-rzaa

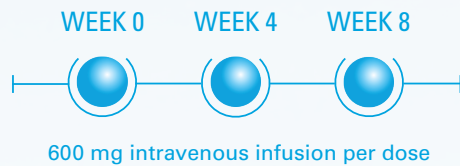


FOR ADULTS WITH MODERATE TO SEVERE CROHN'S DISEASE

# SKYRIZI DOSING

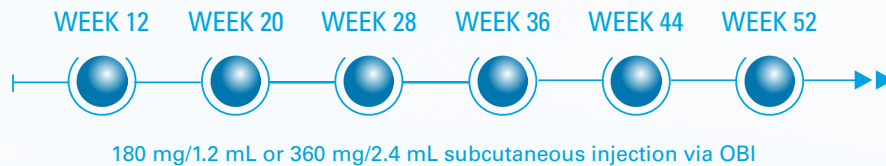
## 3 STARTER DOSES

Your SKYRIZI treatment begins with 3 doses through a vein in the arm (intravenous infusion): 1 dose every 4 weeks. You'll receive the infusions in the doctor's office, in a hospital, or at an infusion center by a healthcare provider.



## THEN ONLY 6 MAINTENANCE DOSES A YEAR

4 weeks after your third infusion, you will begin your maintenance treatment. After receiving training from your healthcare provider on how to inject SKYRIZI, you can administer your treatment at home using the prefilled cartridge with SKYRIZI On-Body Injector (OBI). You'll inject 180 mg or 360 mg under the skin (subcutaneous injection) once every 8 weeks, as prescribed by your doctor. **Your doctor will decide what maintenance dose is right for you.**



Read the **Instructions for Use** before you start using SKYRIZI, available at [WatchSkyriziOBI.com](https://www.WatchSkyriziOBI.com)

## SAFETY CONSIDERATIONS<sup>1</sup>

**SKYRIZI may cause serious side effects, including:**

- **Serious allergic reactions:** Stop using SKYRIZI and get emergency medical help right away if you get any symptoms of a serious allergic reaction.
  - **Infections:** SKYRIZI may increase your risk of infections. Before starting treatment, your doctor should check you for infections and tuberculosis. Tell your doctor right away if you have an infection or symptoms of one.
- Do not use SKYRIZI if you are** allergic to risankizumab-rzaa or any of the ingredients in SKYRIZI.
- Also, tell your doctor if you plan to or recently received a vaccine.
  - **Liver problems in Crohn's disease:** A person with Crohn's disease who received SKYRIZI through a vein in the arm developed changes in liver blood tests with a rash that led to hospitalization. Your doctor will do liver blood tests before and during treatment and may stop treatment with SKYRIZI if you develop liver problems.

**Please see additional Important Safety Information on page 13.**

**Please see full Prescribing Information, including Medication Guide, at [https://www.rxabbvie.com/pdf/skyrizi\\_pi.pdf](https://www.rxabbvie.com/pdf/skyrizi_pi.pdf) and discuss with your doctor.**

  
**Skyrizi**<sup>®</sup>  
risankizumab-rzaa

FOR ADULTS WITH MODERATE TO SEVERE CROHN'S DISEASE

# THE SKYRIZI ON-BODY INJECTOR

Four weeks after your third infusion (at week 12), you'll be ready to start injecting at home. You'll do this every 8 weeks. Each injection is completed in 5 minutes after preparation. Audio and visual cues let you know when the full dose has been delivered.

On-body injections are taken at home, every 8 weeks after proper training from a healthcare professional.

## DESIGNED WITH YOU IN MIND



### COMPACT SIZE

Small enough to fit in the palm of the hand.



### HANDS-FREE

While adhered to the body and after activation, moderate physical activities can be done such as walking, reaching, and bending.



### HIDDEN NEEDLE

Discreet injection so you don't see the needle.



### DOSE DELIVERED IN 5 MINUTES

Completes the injection in set time after preparation and application are complete.



### AUDIO VISUAL CUES

Notifies when full dose has been delivered.

Read the **Instructions for Use** before you start using SKYRIZI,  
available at **SkyriziOBIGuide.com**

## SAFETY CONSIDERATIONS<sup>1</sup>

**SKYRIZI may cause serious side effects, including:**

- **Serious allergic reactions:** Stop using SKYRIZI and get emergency medical help right away if you get any symptoms of a serious allergic reaction.
  - **Infections:** SKYRIZI may increase your risk of infections. Before starting treatment, your doctor should check you for infections and tuberculosis. Tell your doctor right away if you have an infection or symptoms of one.
- Do not use SKYRIZI if you are** allergic to risankizumab-rzaa or any of the ingredients in SKYRIZI.
- Also, tell your doctor if you plan to or recently received a vaccine.
  - **Liver problems in Crohn's disease:** A person with Crohn's disease who received SKYRIZI through a vein in the arm developed changes in liver blood tests with a rash that led to hospitalization. Your doctor will do liver blood tests before and during treatment and may stop treatment with SKYRIZI if you develop liver problems.

**Please see additional Important Safety Information on page 13.**

**Please see full Prescribing Information, including Medication Guide, at [https://www.rxabbvie.com/pdf/skyrizi\\_pi.pdf](https://www.rxabbvie.com/pdf/skyrizi_pi.pdf) and discuss with your doctor.**

  
**Skyrizi**<sup>®</sup>  
risankizumab-rzaa



FOR ADULTS WITH MODERATE TO SEVERE CROHN'S DISEASE

# More information for the **ON-BODY INJECTOR (OBI)**

Your healthcare provider should show you how to inject SKYRIZI using the On-Body Injector. See the SKYRIZI Instructions for Use for the full set of detailed instructions on the preparation and administration of SKYRIZI.

## HERE ARE 5 P's TO HELP YOU REMEMBER:



### 1 PREPARE

Gather alcohol wipes, gauze pads or cotton balls, and sharps disposal container.



### 2 PICK

Pick a place on the thigh or abdomen to inject.



### 3 PEEL

Peel the 2 green pull tabs to reveal the adhesive without touching the needle.



### 4 PLACE

Place the OBI onto the skin. Ensure that the status light is visible.



### 5 PRESS

Press and release the gray start button to begin. A flashing green light will appear. When the injection is complete, the green light goes solid.



## In a patient survey, 93% of patients reported the OBI was "Easy To Use" after the first use

In a survey of the SKYRIZI On-Body Injector (OBI), patient-reported experience was collected using a Self-Injection Assessment Questionnaire (SIAQ). Patients were given the questionnaire after injection training by a healthcare provider (HCP) and following their first self-injection. 42 out of 45 patients reported the OBI was either "easy" or "very easy" to use.

**HOW TO USE SKYRIZI:** See the detailed "Instructions for Use" that comes with SKYRIZI for information on how to prepare and inject a dose of SKYRIZI, and how to properly throw away (dispose of) a used SKYRIZI prefilled cartridge with On-Body Injector. Before self-injecting with SKYRIZI prefilled cartridge with On-Body Injector, your healthcare provider should show you how to inject SKYRIZI.

After reading the Instructions for Use, watch the SKYRIZI OBI Training Video at [WatchSkyriziOBI.com](http://WatchSkyriziOBI.com)

## SAFETY CONSIDERATIONS<sup>1</sup>

SKYRIZI may cause serious side effects, including:

- **Serious allergic reactions:** Stop using SKYRIZI and get emergency medical help right away if you get any symptoms of a serious allergic reaction.
  - **Infections:** SKYRIZI may increase your risk of infections. Before starting treatment, your doctor should check you for infections and tuberculosis. Tell your doctor right away if you have an infection or symptoms of one.
- Do not use SKYRIZI if you are** allergic to risankizumab-rzaa or any of the ingredients in SKYRIZI.
- Also, tell your doctor if you plan to or recently received a vaccine.
  - **Liver problems in Crohn's disease:** A person with Crohn's disease who received SKYRIZI through a vein in the arm developed changes in liver blood tests with a rash that led to hospitalization. Your doctor will do liver blood tests before and during treatment and may stop treatment with SKYRIZI if you develop liver problems.

Please see additional Important Safety Information on page 13.

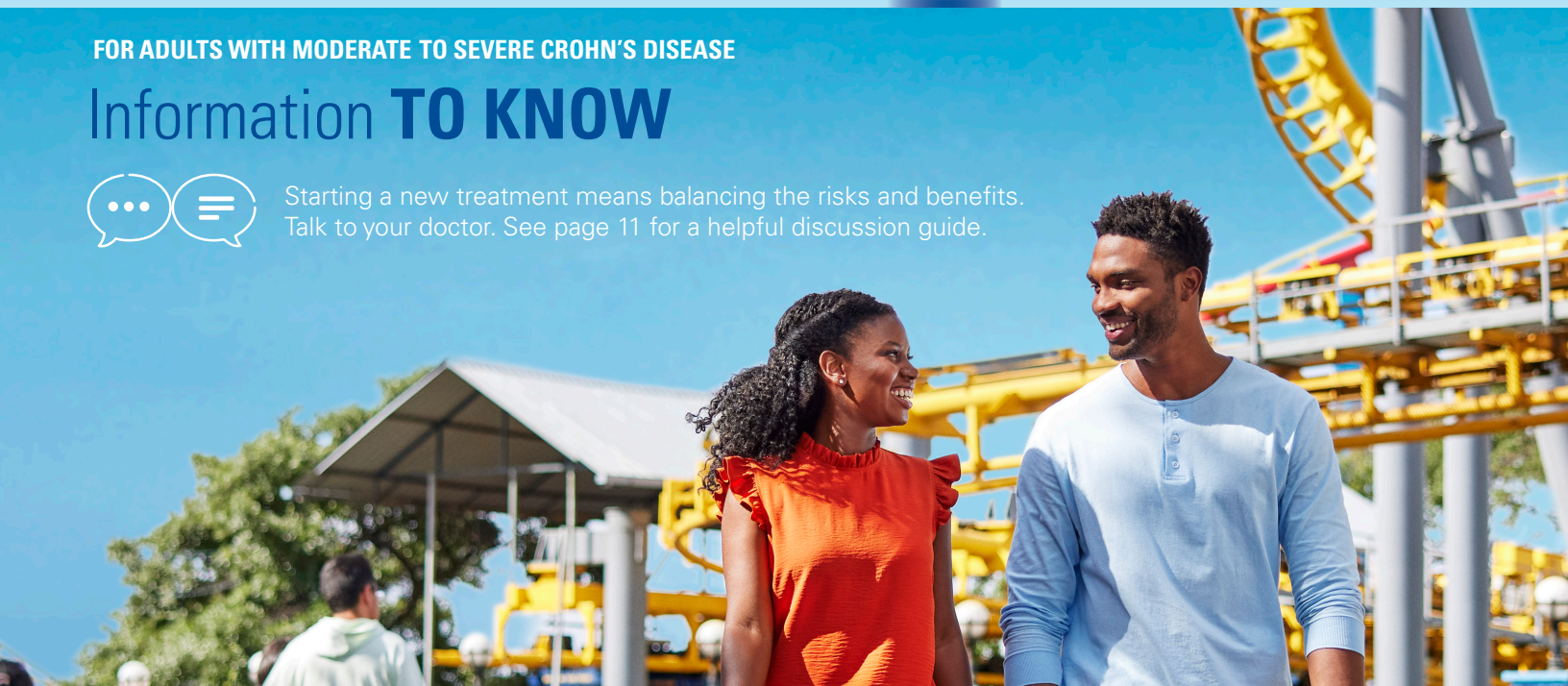
Please see full Prescribing Information, including Medication Guide, at [https://www.rxabbvie.com/pdf/skyrizi\\_pi.pdf](https://www.rxabbvie.com/pdf/skyrizi_pi.pdf) and discuss with your doctor.

  
risankizumab-rzaa

FOR ADULTS WITH MODERATE TO SEVERE CROHN'S DISEASE

Information **TO KNOW**

Starting a new treatment means balancing the risks and benefits. Talk to your doctor. See page 11 for a helpful discussion guide.

**THE MOST COMMON SIDE EFFECTS OF SKYRIZI IN PEOPLE TREATED FOR CROHN'S DISEASE INCLUDE:**

Upper respiratory infections



Stomach (abdominal) pain



Fever



Headache



Injection site reactions



Back pain



Joint pain



Low red blood cells (anemia)



Urinary tract infection

**These are not all the possible side effects of SKYRIZI. Ask your doctor for medical advice about side effects.**

**SAFETY CONSIDERATIONS<sup>1</sup>**

**SKYRIZI may cause serious side effects, including:**

- **Serious allergic reactions:** Stop using SKYRIZI and get emergency medical help right away if you get any symptoms of a serious allergic reaction.
  - **Infections:** SKYRIZI may increase your risk of infections. Before starting treatment, your doctor should check you for infections and tuberculosis. Tell your doctor right away if you have an infection or symptoms of one.
- Do not use SKYRIZI if you are** allergic to risankizumab-rzaa or any of the ingredients in SKYRIZI.
- Also, tell your doctor if you plan to or recently received a vaccine.
  - **Liver problems in Crohn's disease:** A person with Crohn's disease who received SKYRIZI through a vein in the arm developed changes in liver blood tests with a rash that led to hospitalization. Your doctor will do liver blood tests before and during treatment and may stop treatment with SKYRIZI if you develop liver problems.

**Please see additional Important Safety Information on page 13.**

**Please see full Prescribing Information, including Medication Guide, at [https://www.rxabbvie.com/pdf/skyrizi\\_pi.pdf](https://www.rxabbvie.com/pdf/skyrizi_pi.pdf) and discuss with your doctor.**

  
**Skyrizi**<sup>®</sup>  
risankizumab-rzaa



## FOR ADULTS WITH MODERATE TO SEVERE CROHN'S DISEASE

**PARTNER** with your doctor

By having more productive conversations with your doctor, you can work together on a treatment plan that's right for you. Start with these discussion points. Be sure to write down the answers your doctor provides.

**This is how my Crohn's symptoms affect my daily life:**

---



---



---

**Why are endoscopic improvement and clinical remission important treatment goals?**

---



---



---

**Can SKYRIZI help me achieve my treatment goals?**

---



---



---

**What is the most important risk information I should know about SKYRIZI?**

---



---



---

To access a more detailed discussion guide, visit [SkyriziCDDiscussion.com](https://www.skyrizi.com/discussion)

**SAFETY CONSIDERATIONS<sup>1</sup>**

**SKYRIZI may cause serious side effects, including:**

- **Serious allergic reactions:** Stop using SKYRIZI and get emergency medical help right away if you get any symptoms of a serious allergic reaction.
- **Infections:** SKYRIZI may increase your risk of infections. Before starting treatment, your doctor should check you for infections and tuberculosis. Tell your doctor right away if you have an infection or symptoms of one.

**Do not use SKYRIZI if you are** allergic to risankizumab-rzaa or any of the ingredients in SKYRIZI.

- Also, tell your doctor if you plan to or recently received a vaccine.
- **Liver problems in Crohn's disease:** A person with Crohn's disease who received SKYRIZI through a vein in the arm developed changes in liver blood tests with a rash that led to hospitalization. Your doctor will do liver blood tests before and during treatment and may stop treatment with SKYRIZI if you develop liver problems.

**Please see additional Important Safety Information on page 13.**

**Please see full Prescribing Information, including Medication Guide, at [https://www.rxabbvie.com/pdf/skyrizi\\_pi.pdf](https://www.rxabbvie.com/pdf/skyrizi_pi.pdf) and discuss with your doctor.**



**Skyrizi**<sup>®</sup>  
risankizumab-rzaa

# SUPPORT and RESOURCES

## Skyrizi<sup>®</sup> COMPLETE

When taking SKYRIZI, you have a world of personalized support available to you with Skyrizi Complete. You'll get access to a range of resources, including a **dedicated Skyrizi Complete Nurse Ambassador\*** to help you start and stay on track with your prescribed treatment plan.

Once your doctor gives you a prescription for SKYRIZI, you are eligible to enroll in Skyrizi Complete. Here's how:

- Ask your doctor's office to enroll you
- Call **1.866.SKYRIZI** (1.866.759.7494)
- Sign up at **SKYRIZI.com/signup**

\*Nurse Ambassadors are provided by AbbVie and do not work under the direction of your health care professional (HCP) or give medical advice. They are trained to direct patients to their HCP for treatment-related advice, including further referrals.



## PAY AS LITTLE AS \$5<sup>†</sup> PER TREATMENT

If you are an eligible commercially insured patient, the **Skyrizi Complete Savings Card** covers eligible out-of-pocket costs for both your infusions and the SKYRIZI On-Body Injector. It may bring the cost of your SKYRIZI infusions and injections down to **as little as \$5 per treatment.**<sup>†</sup>

Skyrizi Complete Rebate may also be able to help you save on the out-of-pocket costs on your prescription, lab tests, and monitoring related to your SKYRIZI treatment.

To learn more about potential savings and get answers to your insurance questions, call Skyrizi Complete at **1.866.SKYRIZI** (1.866.759.7494)

<sup>†</sup>Eligibility: Available to patients with commercial insurance coverage for SKYRIZI<sup>®</sup> (risankizumab-rzaa) who meet eligibility criteria. This co-pay assistance program is not available to patients receiving prescription reimbursement under any federal, state, or government-funded insurance programs (for example, Medicare [including Part D], Medicare Advantage, Medigap, Medicaid, TRICARE, Department of Defense, or Veterans Affairs programs) or where prohibited by law. Offer subject to change or termination without notice. Restrictions, including monthly maximums, may apply. This is not health insurance. **For full Terms and Conditions, visit [SKYRIZICDSavingsCard.com](https://www.risankizumab.com/skyrizi-complete-savings-card) or call 1.866.SKYRIZI for additional information.** To learn about AbbVie's privacy practices and your privacy choices, visit <https://privacy.abbvie>

Banking services provided by FLCBank, Member FDIC. The Skyrizi Complete Savings Mastercard<sup>®</sup> is issued by FLCBank pursuant to a license Mastercard Inc. and may be used everywhere Mastercard cards are accepted.

## SAFETY CONSIDERATIONS<sup>1</sup>

**SKYRIZI may cause serious side effects, including:**

- **Serious allergic reactions:** Stop using SKYRIZI and get emergency medical help right away if you get any symptoms of a serious allergic reaction.
  - **Infections:** SKYRIZI may increase your risk of infections. Before starting treatment, your doctor should check you for infections and tuberculosis. Tell your doctor right away if you have an infection or symptoms of one.
- Do not use SKYRIZI if you are** allergic to risankizumab-rzaa or any of the ingredients in SKYRIZI.
- Also, tell your doctor if you plan to or recently received a vaccine.
  - **Liver problems in Crohn's disease:** A person with Crohn's disease who received SKYRIZI through a vein in the arm developed changes in liver blood tests with a rash that led to hospitalization. Your doctor will do liver blood tests before and during treatment and may stop treatment with SKYRIZI if you develop liver problems.

**Please see additional Important Safety Information on page 13.**

**Please see full Prescribing Information, including Medication Guide, at [https://www.rxabbvie.com/pdf/skyrizi\\_pi.pdf](https://www.rxabbvie.com/pdf/skyrizi_pi.pdf) and discuss with your doctor.**

  
**Skyrizi**<sup>®</sup>  
risankizumab-rzaa



**IMPORTANT SAFETY INFORMATION<sup>1</sup>****What is the most important information I should know about SKYRIZI® (risankizumab-rzaa)?****SKYRIZI is a prescription medicine that may cause serious side effects, including:****Serious allergic reactions:**

- Stop using SKYRIZI and get emergency medical help right away if you get any of the following symptoms of a serious allergic reaction:
  - fainting, dizziness, feeling lightheaded (low blood pressure)
  - swelling of your face, eyelids, lips, mouth, tongue, or throat
  - trouble breathing or throat tightness
  - chest tightness
  - skin rash, hives
  - itching

**Infections:**

SKYRIZI may lower the ability of your immune system to fight infections and may increase your risk of infections. Your healthcare provider should check you for infections and tuberculosis (TB) before starting treatment with SKYRIZI and may treat you for TB before you begin treatment with SKYRIZI if you have a history of TB or have active TB. Your healthcare provider should watch you closely for signs and symptoms of TB during and after treatment with SKYRIZI.

- Tell your healthcare provider right away if you have an infection or have symptoms of an infection, including:
  - fever, sweats, or chills
  - cough
  - shortness of breath
  - blood in your mucus (phlegm)
  - muscle aches
  - warm, red, or painful skin or sores on your body different from your psoriasis
  - weight loss
  - diarrhea or stomach pain
  - burning when you urinate or urinating more often than normal

**Do not use SKYRIZI if you are** allergic to risankizumab-rzaa or any of the ingredients in SKYRIZI. See the Medication Guide or Consumer Brief Summary for a complete list of ingredients.

**Before using SKYRIZI, tell your healthcare provider about all of your medical conditions, including if you:**

- have any of the conditions or symptoms listed in the section **“What is the most important information I should know about SKYRIZI?”**
- have an infection that does not go away or that keeps coming back.
- have TB or have been in close contact with someone with TB.
- have recently received or are scheduled to receive an immunization (vaccine). Medicines that interact with the immune system may increase your risk of getting an infection after receiving live vaccines. You should avoid

receiving live vaccines right before, during, or right after treatment with SKYRIZI. Tell your healthcare provider that you are taking SKYRIZI before receiving a vaccine.

- are pregnant or plan to become pregnant. It is not known if SKYRIZI can harm your unborn baby.
- are breastfeeding or plan to breastfeed. It is not known if SKYRIZI passes into your breast milk.
- become pregnant while taking SKYRIZI. You are encouraged to enroll in the Pregnancy Registry, which is used to collect information about the health of you and your baby. Talk to your healthcare provider or call 1-877-302-2161 to enroll in this registry.

**Tell your healthcare provider about all the medicines you take**, including prescription and over-the-counter medicines, vitamins, and herbal supplements.

**What are the possible side effects of SKYRIZI?**

**SKYRIZI may cause serious side effects. See “What is the most important information I should know about SKYRIZI?”**

**Liver problems in Crohn’s disease:** A person with Crohn’s disease who received SKYRIZI through a vein in the arm developed changes in liver blood tests with a rash that led to hospitalization. Your healthcare provider will do blood tests to check your liver before, during, and up to 12 weeks of treatment and may stop treatment with SKYRIZI if you develop liver problems. Tell your healthcare provider right away if you notice any of the following symptoms: unexplained rash, nausea, vomiting, stomach (abdominal) pain, tiredness (fatigue), loss of appetite, yellowing of the skin and eyes (jaundice), and dark urine.

**The most common side effects of SKYRIZI in people treated for Crohn’s disease include:** upper respiratory infections, headache, joint pain, stomach (abdominal) pain, injection site reactions, low red blood cells (anemia), fever, back pain, and urinary tract infection.

These are not all the possible side effects of SKYRIZI. Call your doctor for medical advice about side effects.

Use SKYRIZI exactly as your healthcare provider tells you to use it.

SKYRIZI is available in a 600 mg/10 mL vial for intravenous infusion and a 180 mg/1.2 mL or 360 mg/2.4 mL single-dose prefilled cartridge with on-body injector.

**You are encouraged to report negative side effects of prescription drugs to the FDA.**

Visit [www.fda.gov/medwatch](http://www.fda.gov/medwatch) or call 1-800-FDA-1088.

**If you are having difficulty paying for your medicine, AbbVie may be able to help.**

Visit [AbbVie.com/myAbbVieAssist](http://AbbVie.com/myAbbVieAssist) to learn more.

Please see full Prescribing Information, including Medication Guide, at [https://www.rxabbvie.com/pdf/skyrizi\\_pi.pdf](https://www.rxabbvie.com/pdf/skyrizi_pi.pdf) and discuss with your doctor.



**Skyrizi**<sup>®</sup>  
risankizumab-rzaa



# TAKE CONTROL OF YOUR CROHN'S

Talk with your doctor to see if SKYRIZI is right for you.

To learn more about treating Crohn's disease with SKYRIZI, visit [SkyriziCrohns.com](https://www.skyrizi.com)

## SKYRIZI Use<sup>1</sup>

SKYRIZI is a prescription medicine used to treat moderate to severe Crohn's disease in adults.

## SAFETY CONSIDERATIONS<sup>1</sup>

SKYRIZI may cause serious side effects, including:

- **Serious allergic reactions:** Stop using SKYRIZI and get emergency medical help right away if you get any symptoms of a serious allergic reaction.
- **Infections:** SKYRIZI may increase your risk of infections. Before starting treatment, your doctor should check you for infections and tuberculosis. Tell your doctor right away if you have an infection or symptoms of one.

**Do not use SKYRIZI if you are** allergic to risankizumab-rzaa or any of the ingredients in SKYRIZI.

- Also, tell your doctor if you plan to or recently received a vaccine.

- **Liver problems in Crohn's disease:** A person with Crohn's disease who received SKYRIZI through a vein in the arm developed changes in liver blood tests with a rash that led to hospitalization. Your doctor will do liver blood tests before and during treatment and may stop treatment with SKYRIZI if you develop liver problems.

Please see additional Important Safety Information on page 13.

**Please see full Prescribing Information, including Medication Guide, at [https://www.rxabbvie.com/pdf/skyrizi\\_pi.pdf](https://www.rxabbvie.com/pdf/skyrizi_pi.pdf) and discuss with your doctor.**

abbvie

© 2023 AbbVie. All rights reserved.  
SKYRIZI® and its design are registered trademarks of AbbVie Biotechnology Ltd.  
US-SKZG-220464